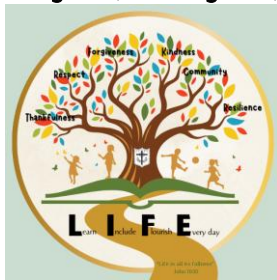


Cotgrave Church of England Primary School

The Cross, Cotgrave, Nottingham, NG12 3HS

Headteacher:
Mrs Helen Pearson



Telephone: 0115 989 2204

office@cotgrave.snmat.org.uk

22.01.26

Dear Parents and Carers,

I am writing to share our most recent Ofsted report with you and to explain some important changes to the way Ofsted now reports on schools.

Our school was one of the first schools in the country to be inspected under this new Ofsted framework. As a result, the format and language of the report may look different from what you are used to seeing, and I would like to take this opportunity to explain what this means.

Ofsted has moved away from focusing on a single overall judgement. Instead, schools are evaluated across a range of key areas to provide a clearer and more balanced picture of school life. This change is intended to help parents better understand both a school's strengths and the areas where it continues to develop.

Inspectors look closely at the following 8 areas:

- Safeguarding- how effectively a school protects pupils from harm, keeps them safe in and out of school, and ensures that all staff understand their responsibilities in recognising and responding to concerns.
- Inclusion- how effectively a school ensures that all pupils, regardless of background, need, or circumstance, are welcomed, supported, taught well and enabled to achieve their full potential.
- Personal Development and wellbeing – how the school supports children's wellbeing, confidence, character and life skills.
- Leadership and Governance – how well the school is led, including safeguarding and ongoing improvement.
- Early Years – how effectively the youngest children are supported in their learning and development.
- Curriculum and teaching – how well the curriculum is planned and taught, and how children build knowledge and skills over time.
- Achievement- how well pupils learn, remember, and apply knowledge over time and how effectively they progress from their starting points.
- Attendance and Behaviour – how well children attend school and how safe, calm and respectful the school environment is.

Together, these areas give a fuller picture of what children experience at school each day.

Rather than relying on a single headline judgement, Ofsted now provides descriptive grading statements for each area of inspection. These show how securely expectations are being met and help to identify specific strengths as well as clear next steps.

In simple terms, the gradings indicate whether an area is:

Exceptional: Rare, top-tier practice that is among the best in the country.

Strong Standard: Consistently excellent practice that goes well beyond expectations and represents a level only reached by a small number of schools.

Expected Standard: The new baseline. It means the school is doing everything it should be doing—a high, solid standard.

Needs Attention: Some issues to fix, but not a "fail." It indicates where focus is needed.

Urgent Improvement: Serious, immediate concerns that must be addressed.

It is important to note that schools may be at different stages across different areas and this is entirely normal. The new framework is designed to reflect the complexity of school life and to provide greater transparency for parents.

We are delighted that the report recognises many strengths of our school and we are equally committed to continuing to develop areas identified for improvement so that every child can thrive.

The full Ofsted report is available on our website and, shortly, on the Ofsted website. If you have any questions or would like to discuss the report further, please do not hesitate to contact the school.

Thank you, as always, for your continued support.

Yours sincerely,

Mrs A Besnard

Chair of Governors