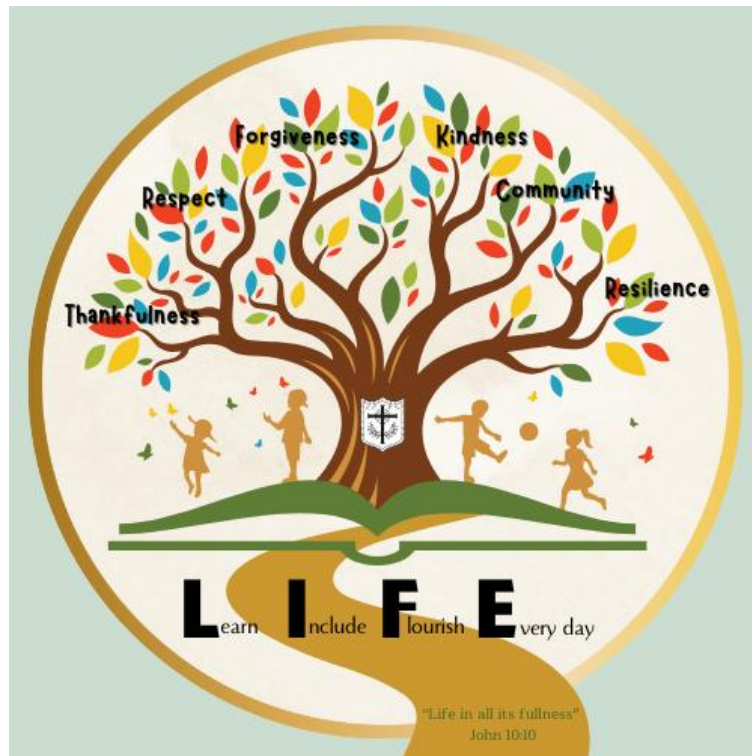


Cotgrave Church of England Primary School



Prevent Action Plan and Policy

Reviewed

Autumn 2025			

1. Introduction and Purpose

This policy outlines Cotgrave Church of England Primary School's commitment to safeguarding pupils from radicalisation and extremism, in accordance with the Counter-Terrorism and Security Act 2015 and the Prevent Duty guidance. The Prevent Duty is the duty in the Counter-Terrorism and Security Act 2015 on specified authorities, including schools, to have due regard to the need to prevent people from being drawn into terrorism.

Purpose:

- To protect pupils from the risk of radicalisation and extremism.
- To provide a safe and supportive environment where pupils can discuss sensitive issues safely.
- To promote fundamental British values, including democracy, the rule of law, individual liberty, and mutual respect and tolerance of those with different faiths and beliefs.
- To ensure staff are trained to identify and respond to potential signs of radicalisation.
- To work in partnership with parents, carers, and external agencies to safeguard pupils.

2. Legislative Framework and Guidance

This policy is informed by the following legislation and guidance:

- Counter-Terrorism and Security Act 2015 (Prevent Duty)
- Keeping Children Safe in Education (KCSIE)
- Channel Duty Guidance
- Education Act 2002 (Section 175)

3. Risk Assessment

Cotgrave Church of England Primary School recognises that the risk of radicalisation is low but not non-existent. The school will conduct a regular risk assessment to identify potential vulnerabilities and inform preventative measures.

Risk Factors:

- Online radicalisation
- Exposure to extremist ideologies through social media or other sources
- Vulnerability factors (e.g., social isolation, mental health issues, family breakdown, special educational needs, safeguarding concerns)

- Community tensions or events that could be exploited by extremists

Mitigation Strategies:

- Promoting critical thinking and media literacy skills
- Providing a balanced curriculum that explores diverse perspectives
- Creating a supportive and inclusive school environment
- Working with external agencies to address specific risks

4. Roles and Responsibilities

Governing Body:

- Ensuring the school complies with the Prevent Duty.
- Overseeing the implementation of this policy.
- Receiving reports on Prevent-related activity.

Headteacher:

- Overall responsibility for safeguarding and Prevent.
- Ensuring staff are trained and aware of their responsibilities.
- Liaising with external agencies.

Designated Safeguarding Lead (DSL):

- Day-to-day responsibility for Prevent.
- Receiving and responding to concerns about radicalisation.
- Making referrals to Channel or other appropriate agencies.

All Staff:

- Being vigilant for signs of radicalisation.
- Reporting any concerns to the DSL.
- Promoting fundamental British values in their teaching.
- Creating a safe and supportive classroom environment.

Pupils:

- Understanding and respecting different views.
- Reporting any concerns to a trusted adult.
- Participating in discussions about sensitive issues in a respectful manner.

Parents/Carers:

- Working in partnership with the school to safeguard their children.
- Sharing any concerns with the school.
- Supporting the school's efforts to promote fundamental British values.

5. Training and Awareness

All staff will receive regular training on Prevent, safeguarding, and extremism awareness. Training will cover:

- The Prevent Duty and its implications for schools.
- Understanding radicalisation and extremism.
- Identifying signs of radicalisation.
- Responding to concerns about radicalisation.
- Promoting fundamental British values.
- Safeguarding procedures.
- Channel awareness.

6. Curriculum

The curriculum will be used to promote fundamental British values, critical thinking, and resilience to extremist ideologies.

Curriculum Content:

- Citizenship education
- Religious education
- Personal, Social, Health and Economic (PSHE) education
- History
- English (exploring diverse perspectives and challenging stereotypes)

Teaching Strategies:

- Encouraging open discussion and debate
- Using a range of resources to present different viewpoints
- Promoting critical thinking skills
- Providing opportunities for pupils to challenge extremist narratives
- Collective Worship

7. Reporting Concerns

Any member of staff who has concerns about a pupil's vulnerability to radicalisation should report these concerns to the DSL immediately.

Reporting Procedure:

- Report concerns to the DSL using CPOMS including details of the pupil, the nature of the concern, and any relevant background information.

- The DSL will assess the information and determine the appropriate course of action.
- This may include:
 - Gathering further information
 - Discussing the concerns with the Headteacher
 - Making a referral to Channel or other appropriate agencies
 - Informing parents/carers (unless doing so would place the pupil at further risk)

Confidentiality:

- Information will be shared on a need-to-know basis only.
- All records will be kept securely and in accordance with data protection legislation.

8. Working with External Agencies

Cotgrave Church of England Primary School will work in partnership with external agencies to safeguard pupils from radicalisation.

Key Partners:

- Local Authority Prevent Team
- Police
- Channel Panel
- Children's Social Care
- Mental Health Services

Collaboration:

- Sharing information and intelligence
- Participating in multi-agency meetings
- Seeking advice and support
- Referring pupils to appropriate services

9. Online Safety

The school recognises that the internet can be a source of radicalisation and will take steps to protect pupils online.

Measures:

- Implementing robust filtering and monitoring systems
- Providing pupils with education on online safety, including critical thinking skills and awareness of extremist content
- Supervising pupils' online activity
- Reporting illegal content to the Internet Watch Foundation

10. Monitoring and Evaluation

The implementation of this policy will be monitored and evaluated regularly.

Monitoring Activities:

- Reviewing training records
- Tracking referrals to Channel
- Monitoring the curriculum
- Gathering feedback from staff, pupils, and parents
- Analysing data on pupil attendance and behaviour

Evaluation:

- Assessing the effectiveness of the policy in safeguarding pupils from radicalisation
- Identifying areas for improvement
- Updating the policy as necessary

11. Policy Review

This policy will be reviewed annually, or more frequently if necessary, to ensure it remains effective and compliant with relevant legislation and guidance.

12. Related Policies

- Safeguarding Policy
- Child Protection Policy
- Behaviour Policy
- Anti-Bullying Policy
- Online Safety Policy
- SEND Policy
- Equality Policy

13. Communication

This policy will be communicated to all staff, pupils, parents, and governors.

- **Methods of Communication:**
 - Staff training
 - School website
 - Parent information evenings
 - Pupil assemblies
 - Newsletters

