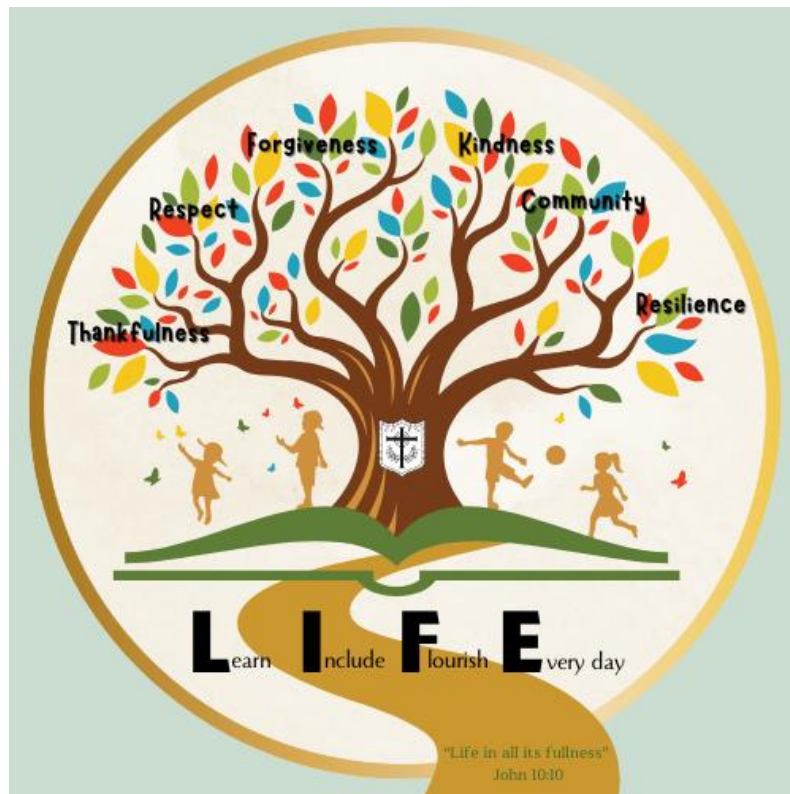


Cotgrave Church of England Primary School



COLLECTIVE WORSHIP POLICY

Reviewed

Spring 2009	Spring 2021		
Spring 2011	Spring 2023		
Spring 2013	Spring 2025		
Spring 2016			
Spring 2019			



DIOCESE OF SOUTHWELL
& NOTTINGHAM
MULTI ACADEMY TRUST

Cotgrave Church of England Primary School

Collective Worship Policy

Introduction

Our collective worship is an affirmation and celebration of the values and ethos of the school. This collective worship is wholly Christian, as would be expected in a Church of England voluntary aided school. There will be a daily act of worship for all pupils in accordance with the requirements of the 1988 Education Reform Act.

Aims

Our collective worship aims to encourage a sense of unity and identity between all taking part and to set aside a time for reflection. This collective worship:

- Is inclusive. In principle, all pupils and adults gain, no matter what their personal commitment and a sense of fellowship can be fostered by bringing the children and staff together. Makaton signing is included within our worship.
- Contributes to the children's and adults' spiritual, moral, social and cultural development, enabling each to grow spiritually through experiences of prayer, stillness, worship and reflection.
- Is planned from a framework of themes for collective worship, helping pupils and adults to appreciate the relevance of faith in today's world, to encounter the teachings of Jesus and the Bible and to develop their understanding of the Christian belief in the Trinitarian nature of God.
- Examines Christian heritage and in particular the heritage of the Anglican denomination. The worship will include 'Anglican' responses and other language eg each worship time will begin with 'The Lord be with you' – 'And also with you'. At the same time, however, our worship enables all pupils and adults to appreciate that Christians worship in different ways.
- Explores the liturgical year (represented by table cloths in the liturgical colours on the worship table and during Advent by the Advent Crown) and Christian calendar, which is common to the Anglican and many other traditions.
- Is an occasion, having an atmosphere not possible within the classroom. Music, hymn singing, time for reflection, silence, story and prayer are important and common features of our collective worship.
- Uses the Bible along with Christian symbols (e.g. the cross and candle) and opportunities for reflection and quiet.
- Is celebratory. During our Wednesday worship each week there is a celebration of the children's achievement. This is seen in the setting of inspiration and Christian beliefs and values. Parents and friends are invited.

Presentation

Consideration will be given to the language used when conducting worship. Inclusive language such as "we believe that" will be avoided and phrases like "Christians believe" used in its place. However within prayer inclusive language may be used. Children will be asked to reflect on Christian beliefs and be given opportunities to respond in their own way.

The Church of England Rector will regularly lead collective worship and other visiting speakers will also be invited where appropriate. The children will be taken to All Saints Church, Cotgrave every Wednesday for collective worship and special services, such as Harvest Thanksgiving, Carol Services, Easter Services and Leavers' Services. Worship is also an integral part of planned visits to Southwell Minster by children in both Key Stage 1 and Key Stage 2.

Children will regularly lead act of collective worship. In the main, this will be a planned monthly 'Class Worship' held in the parish church on a Wednesday morning, with parents from the class taking the lead role specifically invited. This opportunity will 'move around the classes' in rotation through the school year.

All staff will attend collective worship wherever possible and the Head Teacher will take the lead role in worship, underlining the importance of worship in the wider life of the school. Teachers will all lead worship during the term.

Collective worship will be prominently placed at the start or end of each day, giving the whole school the opportunity to begin the day together. We see a particular importance to collective worship taking place at the end

of the day, giving the whole school the opportunity to end the week together and to say 'The Grace' to each other at the conclusion of the act of worship.

'Worship' will be kept separate from 'assembly'. Information, birthdays or items of 'news' will be announced before the act of worship begins wherever possible. The candle will be lit and opening greeting given after the announcement. It is intended that the children are sent away in reflective mood: notices will come first so as not to distract from the worship atmosphere.

Themes

Recognition is given to the view that personal integrity is the most important element when planning for worship. Themes are, however, set out in a rolling programme. These themes are linked to the progression of the school year and the liturgical calendar. Appropriate hymns and songs are chosen for each theme. Choice within the theme is left to the professionalism, integrity and sensitivity of the worship leader.

Recording

Worship will be recorded in the collective worship folder kept in the Head Teacher's office and kept as a whole school record for reference.

Review

All policies are subject to periodic evaluation and update.

