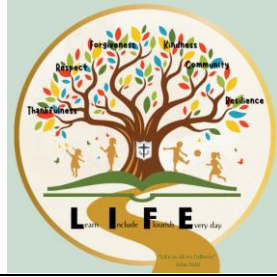


Cotgrave Church of England Primary School

The Cross, Cotgrave, Nottingham, NG12 3HS

Headteacher:
Mrs Helen Pearson



Telephone: 0115 989 2204

office@cotgrave.smat.org.uk

Friday 14th February

Dear Parents,

I am pleased to announce that we will be going on a class trip to The Old Barn Farm in Rolleston on Wednesday 26th March to support our Spring Topic of 'Down at the bottom of the garden'.

The children will spend the day at the farm and will have the opportunity to:

- Do a farm walk to see vegetables growing
- Pick vegetables, prepare and make a smoothie
- Investigate corn, use hand grinders to make flour
- Visit the combine harvester
- Free play in the mud kitchen, small tractors and fields

We are requesting a voluntary donation of £10 (to be paid via School Money) to cover the cost of the trip. **There is complete remission for those children supported by Pupil Premium funding.**

The children will be leaving school at 9:30 am and will travel by coach to the farm. We will be returning before the end of the school day.

I will send a letter nearer the time to confirm clothing depending on weather. They will need to bring a packed lunch and a water bottle which they will need to carry in a small rucksack. Please return your permission slips by Monday 3rd March.

I am sure this will be a very exciting trip with lots of amazing opportunities to support our topic with enthusiasm.

Yours sincerely,

Mrs Emily Black

I give permission for my child _____ to take part in the educational visit to Old Barn Farm on Wednesday 26th March 2025.

I have paid via School Money a voluntary contribution of £10.00 towards the cost of the visit.

Signed _____